



Minxcon

www.minxcon.co.za

COMPANY PROFILE

ABOUT US

Minxcon is a multi-faceted South African advisory company offering an integrated team of internationally accredited experts to investigate and develop your mineral project. Our core business is to provide local and international clients with independent solutions to all matters arising in the fields of mining. Our ability to provide services and advice from the project inception stage to the successful execution and management of the operation and closure makes Minxcon exceptionally diversified. New and existing mineral projects benefit from our comprehensive service offering through our one-stop firm.

We strive to ensure delivery of independent and integrated quality projects while being conscious of risks and project costs. Our experienced and diversified team is skilled in completing a multitude of studies, extracting fit-for-purpose innovative and trusted solutions. We undertake projects targeting a broad spectrum of minerals occurring within all terrestrial geological terranes.

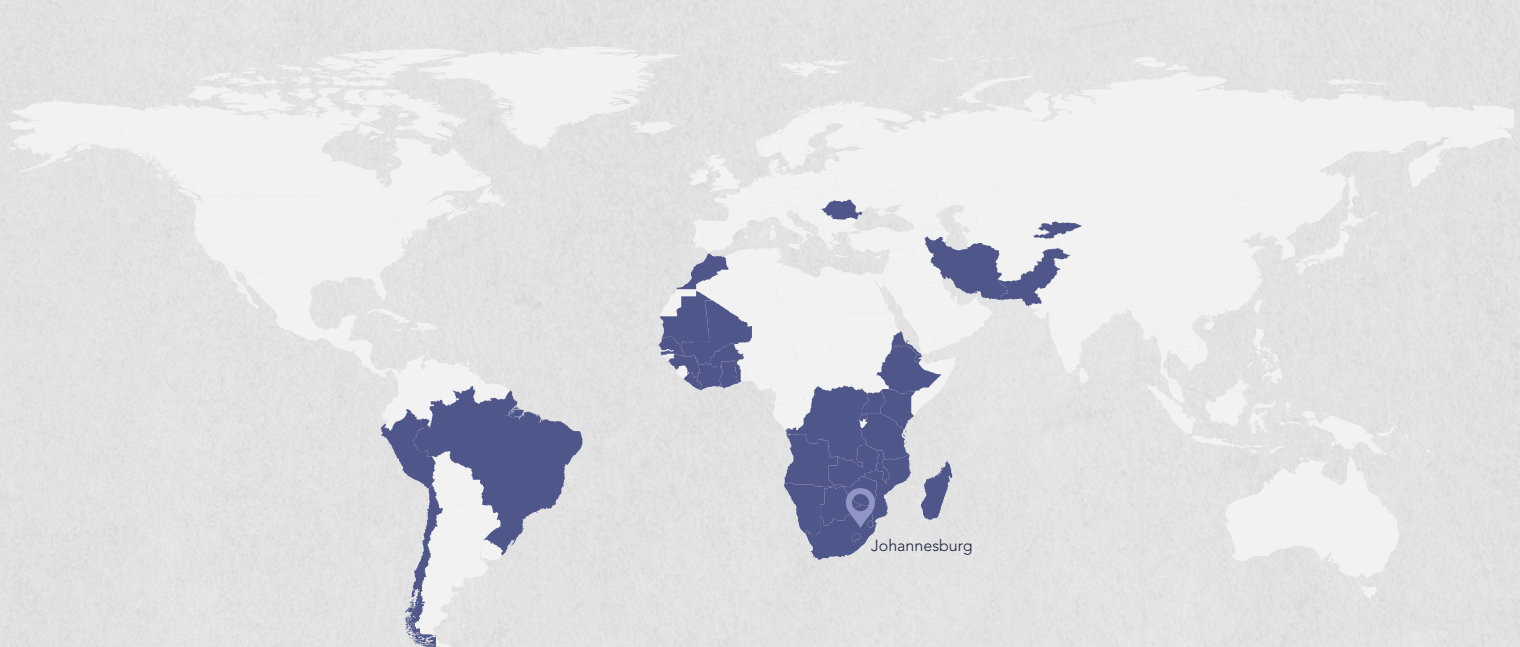
We have numerous years of experience in the implementation and maintenance of industry best practices and our reporting is in line with international mineral reporting codes and securities exchange regulations. Our client base ranges from junior to large mining corporations and mid-tier resource companies to banks and corporate investors.

Our Professional Affiliations:

ECSA | SACNASP | EAPASA | GSSA | SAIMM | MMSA | IAIASA

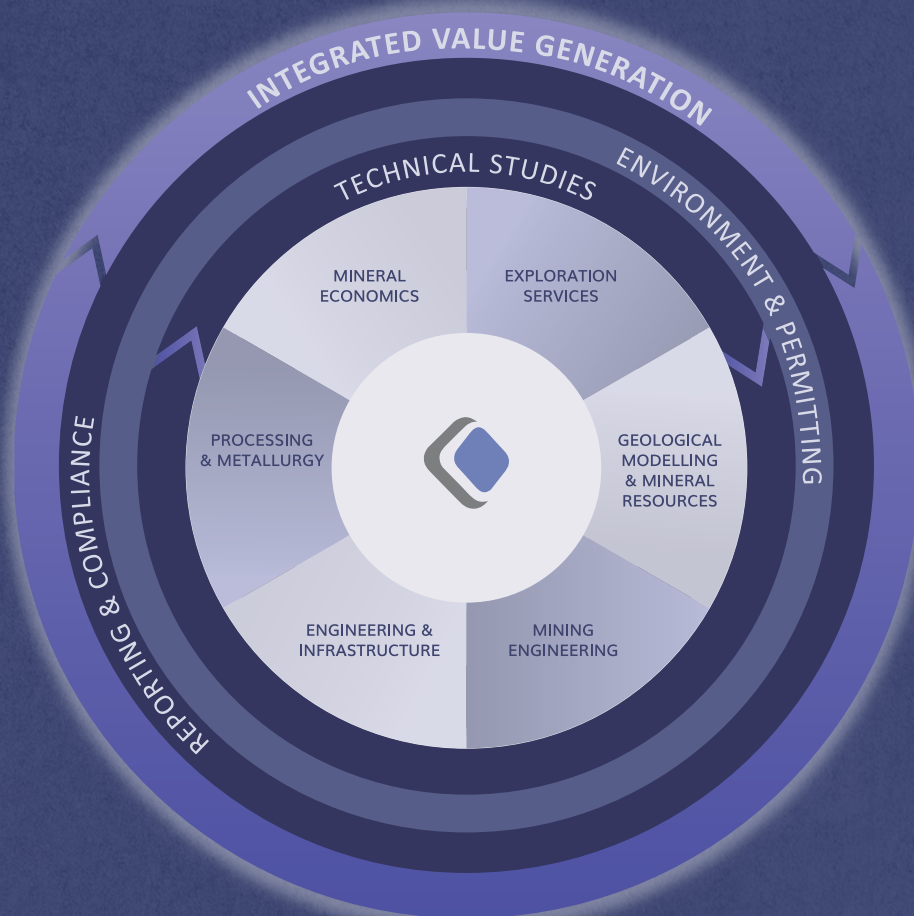
Mineral Reporting Codes:

SAMREC | JORC | NI 43-101 | S-K 1300



ADDING VALUE

Minxcon is experienced in providing advisory, technical and project lead services at every stage through the project value chain. Our team works in close co-operation to ensure that all clients benefit from the services of our credible professionals, maximising project value and ensuring that we establish and maintain long-term relationships with our clients.



OUR CORE BUSINESS

STUDIES

CPR

DUE DILIGENCE

VALUATION

RESOURCE ESTIMATION

LOM RESERVE ESTIMATION

Underground • Open Pit • Hard Rock • Placer • Tailings
Grassroots • Greenfields • Brownfields • Operations

OUR COMMODITY EXPERIENCE

Gold • Uranium • PGM • Coal • Base Metals • Ferrous Metals • Non-Ferrous Metals • Diamonds
Limestone • Antimony • Clay • Fluorspar • Potash • Guano • Heavy Mineral Sands • Phosphate
Dimension • Stone • Vanadium • Silver • Lithium • Tantalum

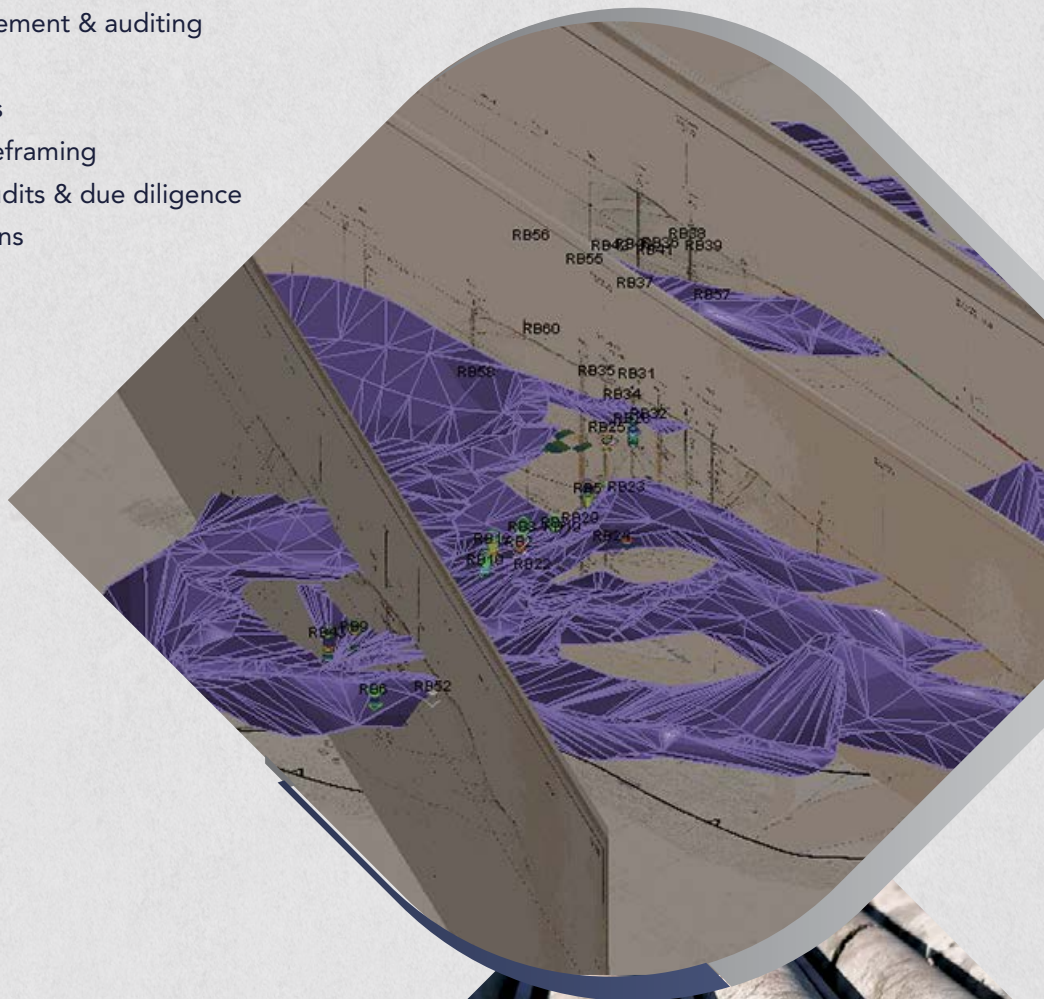
OUR SERVICES

Exploration & Resources



Minxcon aims to realise the potential of orebodies by focusing on the geological component of projects by generating world-class explicit and implicit geological models serving as solid foundations to compliant resource estimation. Our geologists are highly knowledgeable in ore deposit formation processes and distribution within a vast range of geological settings. We tailor exploration programmes and reviews to follow industry best practices and strict statutory requirements that ensure effective and budget-sensitive exploration to produce advanced, integrated exploration databases. We provide technical sound, yet practical solutions for geostatistical and geological models that define the deposit.

- Exploration target generation
- Exploration programme design & management
- GIS data compilation & mapping
- Geological mapping
- Core logging & sampling
- Database design, compilation, review & validation
- QAQC systems design, management & auditing
- On-shaft exploration projects
- Resource management systems
- 3D geological modelling & wireframing
- Mineral resource estimation, audits & due diligence
- Manual to digital transformations
- Technical reporting
- Statistics & geostatistics
- Geological & structural analysis
- Contract geological services



Mining Engineering



Our team combines the skills and practical operational mining experience required to complete and sign-off as competent persons on mine designs and schedules for studies from concept to definitive feasibility studies. We pride ourselves in developing innovative and creative mining solutions defining the optimal extraction strategy for an orebody. Minxcon is well equipped to conduct open pit as well as underground mine design and scheduling. Our independent expertise and high quality mine planning utilise state of the art software to produce optimised, cost effective, risk managed solutions for new and existing operations.

- Mining engineering
- Open pit & underground mine design
- Mine planning & production scheduling
- Operational efficiency & optimisation
- Open pit & mine stope optimisations
- Mine simulation
- Reserve estimation
- Capital & operating cost estimation
- Ore blending strategies
- Fleet selection
- Cut-off & pay limit calculations
- Access development design & scheduling
- Mining strategy review & analysis
- Feasibility studies & technical reporting
- Operational mine management
- Trade off & benchmarking studies



Engineering



Our multi-disciplinary team is well experienced in completing designs for all engineering and mining related infrastructure from desktop level to feasibility studies. The practical and innovative engineering process utilised allows for unique project-specific and cost effective solutions. Our team has extensive practical, operational and project management experience in the mining industry. This places us in an optimal position to provide solutions and supply services that will optimise every phase of the project development.

- Built environment design & costing
- Logistics systems
- Water & energy supply & distribution
- Water & energy management optimisation
- Jurisdictional design consideration
- Bill of quantities & EPCM
- Construction support
- Risk & scenario analysis
- Operational readiness planning
- Feasibility studies & technical reporting
- Project execution planning
- Operational & project management
- Contract management
- Best practice alignment
- Trade off & benchmarking studies



Processing & Metallurgy



Our metallurgical team approaches design, review and implementation with the aim to ensure that process improvements and performance are optimised and sustainable for the long term. Minxcon is able to design and construct milling, leaching, extraction and tailings solutions for various commodities. Economic returns are maximised through customised solutions that integrate technologies and processes. We have plant production, operating and management experience, allowing us to design optimised plant and processing infrastructure, develop and implement processes and procedures and provide support to operating plants.

- Plant & process engineering
- Process optimisation & flow design
- Operational management design & services
- Metallurgical accounting
- Preliminary economic assessments
- Laboratory & pilot plant testwork
- Customised processing solutions
- Capital & operating cost estimations
- Plant efficiencies & throughput
- Tailings dam design
- Feasibility studies & technical reporting
- Contract plant management & personnel training
- SIC systems & SOP design & implementation
- Trade off & benchmarking studies



Mineral Economics & Valuation



Minxcon provides independent comprehensive financial modelling and valuation services at all stages of the project life cycle by a competent team of qualified professionals. Our mineral economists combine the technical knowledge of exploration, mining and processing with economic input parameters to produce a monetary value. With previous hands-on experience in global investment banking, operational management and technical services provision, we are well equipped to advise on mining transactions and financing structures to maximise profits and increase the shareholder value of the firm. Valuations are done in compliance with reporting and regulatory guidelines in all reporting jurisdictions.

- Asset & mineral asset valuation
- Cash flow modelling
- Financial due diligence studies
- Sensitivity studies & analyses
- Commodity & market analyses
- Project viability opinions
- Financial due diligence
- Feasibility studies & financial reporting
- Fairness opinions
- Corporate finance
- Balance sheet & income statement modelling
- Revenue forecasting
- Business planning & turnaround strategy
- Advisory for exchange listings
- Advisory for mergers, acquisitions & restructuring

Environment, Community & Permitting



Through our experienced team of environmental scientists, we offer proactive environmental and social services which form an integral part in the development of mineral projects through operation to post-closure phases. Together with our diversified technical capability in the minerals sector, we provide a complete team of experienced independent experts to investigate and develop a mineral asset towards sustainable operations. The team provides on-site management, implementation and study services. We are well positioned to guide in the development and maintenance of sound ESG practices and to guide companies towards excellent governance standards.

- Permitting & licencing applications
- Environmental authorisation applications
- Water use licence applications
- Licence management & renewals
- Environmental impact & basic assessments
- Environmental management, closure & rehabilitation planning
- ISO management systems implementation
- Environmental audits & due diligence
- Project management
- Social impact & development plans
- Monitoring
- Stakeholder engagement & public participation
- Annual reporting
- Compliance alignment
- SHEQ



Reporting & Compliance

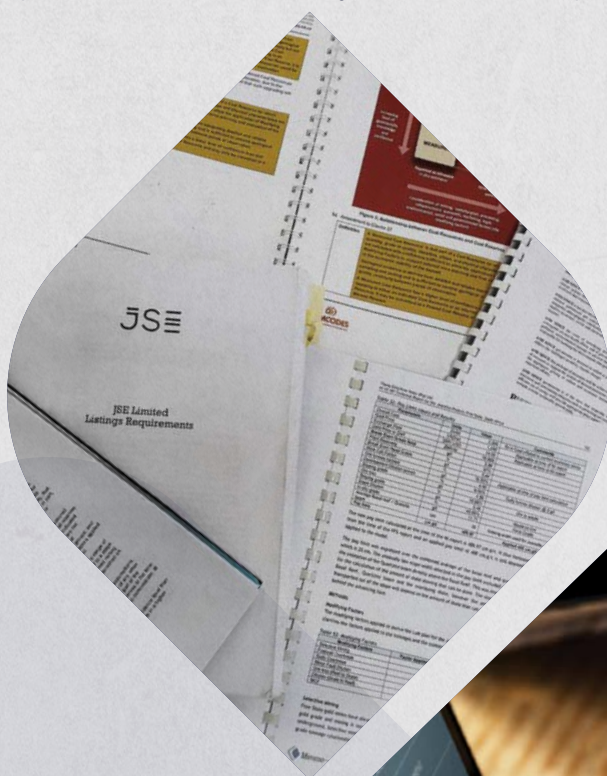


High-quality reporting is imperative for the mining and minerals industry in order to remain transparent and dependable to project owners and investors in both the private and public sectors. To present technical information in a competent manner, Minxcon is fully conversant in reporting in compliance with international reporting codes and securities commissions that regulate the level and quality of information presented. Our resource and reserve modelling and estimation are compliant with the various global mineral reporting codes.

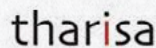
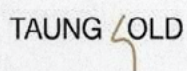
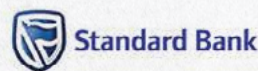
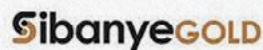
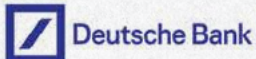
- South Africa: SAMREC Code, SAMVAL Code
- Australia: JORC Code, VALMIN Code
- Canada: National Instrument 43-101, CIMVal
- USA: S-K 1300

Minxcon's reports comply with local and international reporting standards and have been globally accepted in all the reporting jurisdictions including on the JSE, ASX, TSX, NYSE and LSE. Our personnel are members of the various regulatory bodies which exercise control over the standards of conduct for professional natural scientists and engineers. By adhering to international standards and reporting practices, Minxcon is regularly verified as an independent industry specialist and our independent competent person sign-offs that are globally recognised. We are further able to manage and ensure that exploration protocols and mining practices are completed in adherence to the minerals codes requirements, which ultimately adds value to the project as it develops.

- Compliance
- Auditing
- Technical & annual reporting
- Competent person sign-off
- Expert witness
- Feasibility study
- Due diligence
- Gap analysis
- Risk management
- ESG strategy



Clients



CONTACT US

Minxcon (Pty) Ltd
Office: +27 (11) 958 2899
Email: reception@minxcon.co.za

Coldstream Office Park, 2 Coldstream Street,
Little Falls, Roodepoort, Gauteng, South Africa
GPS 26°06'20"S 27°52'48"E

Reg No.: 2004/029587/07
VAT No.: 4790217915

